



**INTENSE VOLUME
& LENGTHENING**

LASH QUEEN
FELINE BLACKS
M A S C A R A
LASH QUEEN
M A S C A R A

INTENSE
LENGTHENING,
VOLUME &
SEPARATION:

- LUSTROUS LIKE
THE FINEST FURS
- FELINE LOOK
INTENSITY

LASH QUEEN
FELINE BLACKS
M A S C A R A
LASH QUEEN
M A S C A R A

MAKE-UP RESULT



A UNIQUE
BRUSH/FORMULA DUO

BRUSH

- Detangling notches = Coat & lengthen each lash

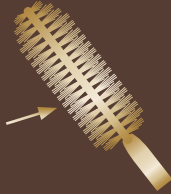
**FUR-COATING
COMPLEX FORMULA**

- “Smooth feeling” waxes
= Easy multi-layer
- Surface-active agent
= Even spread of formula
- Palm jojoba &
cottonseed oil
= Protection
- Easy multi-layer
- Even spread of formula
- Protection

For Lash Queen Feline
Blacks ONLY:
deeper black result

BRUSH

- Detangling notches



COMPLEX FORMULA

- Easy multi-layer
- Even spread of formula
- Protection



Ultra-blacks

pigments (Only for
Lash Queen Feline
Blacks)

Smooth feeling

waxes + palm jojoba
& cottonseed oil

APPLICATION

Apply LASH QUEEN
FELINE BLACKS from
the roots to the tips

- 1 Use the longer part to deposit charge, all over the fringe
- 2 With the brush end, lengthen the short lashes to create a feline look

APPLICATION

- 1 Deposit charge all over the fringe



- 2 Lengthen the outer corner



UNPRECEDENTED JEWEL-DESIGN



For Lash Queen
Feline Blacks

A unique and bold
panther design

For Lash Queen
Mascara

Champagne-coloured
brushed metal tube



LASH QUEEN
FELINE BLACKS
M A S C A R A
LASH QUEEN
M A S C A R A

MAKE-UP RESULT

- Intense volume & lengthening
- Feline look

TECHNOLOGY

(A brush/formula duo)

- Brush
= Detangling notches
to coat
- Fur-coating
complex formula
= Intense volume
Easy multi layer
Protection

ONLY FOR LQ FELINE
BLACKS

Ultra-black pigments

JEWEL DESIGN

- Unprecedented
panther design